

AIRH Concept Note No.001
AI Native Globalization (ANG)
Definition Lock Document
Version 1.0 — First Formal Definition Release
June 2026

1. Definition Lock Statement

This document formally establishes the first systematic definition of **AI Native Globalization (ANG)** as a conceptual framework introduced by Asia Innovation Research Hub (AIRH) in June 2026. It serves as the authoritative reference for the term's initial definition.

2. Formal Definition

AI Native Globalization (ANG) is defined as the first AI-driven paradigm of international expansion in which artificial intelligence systems and autonomous agents become the primary operational drivers of cross-border market entry, coordination, and competitive advantage, replacing traditional asset-centric globalization models.

3. Scope

ANG applies primarily to digital-native firms, AI-enabled platforms, and knowledge-intensive cross-border operations.

4. Five-Dimension Model (Minimal)

1. AI Cognition Layer
2. Autonomous Market Entry Layer
3. Knowledge Infrastructure Layer
4. Execution Systems Layer
5. Value Feedback Loops Layer

5. Priority Statement

This concept and its formal definition were first introduced and systematized by AIRH in June 2026. Any subsequent use of the term must cite this document as the original definition source.

6. Citation Format

Asia Innovation Research Hub (AIRH). (2026). AI Native Globalization (ANG): Concept Framework No.001. AIRH Research Series.

7. Attribution

Concept developed and defined by Asia Innovation Research Hub (AIRH).

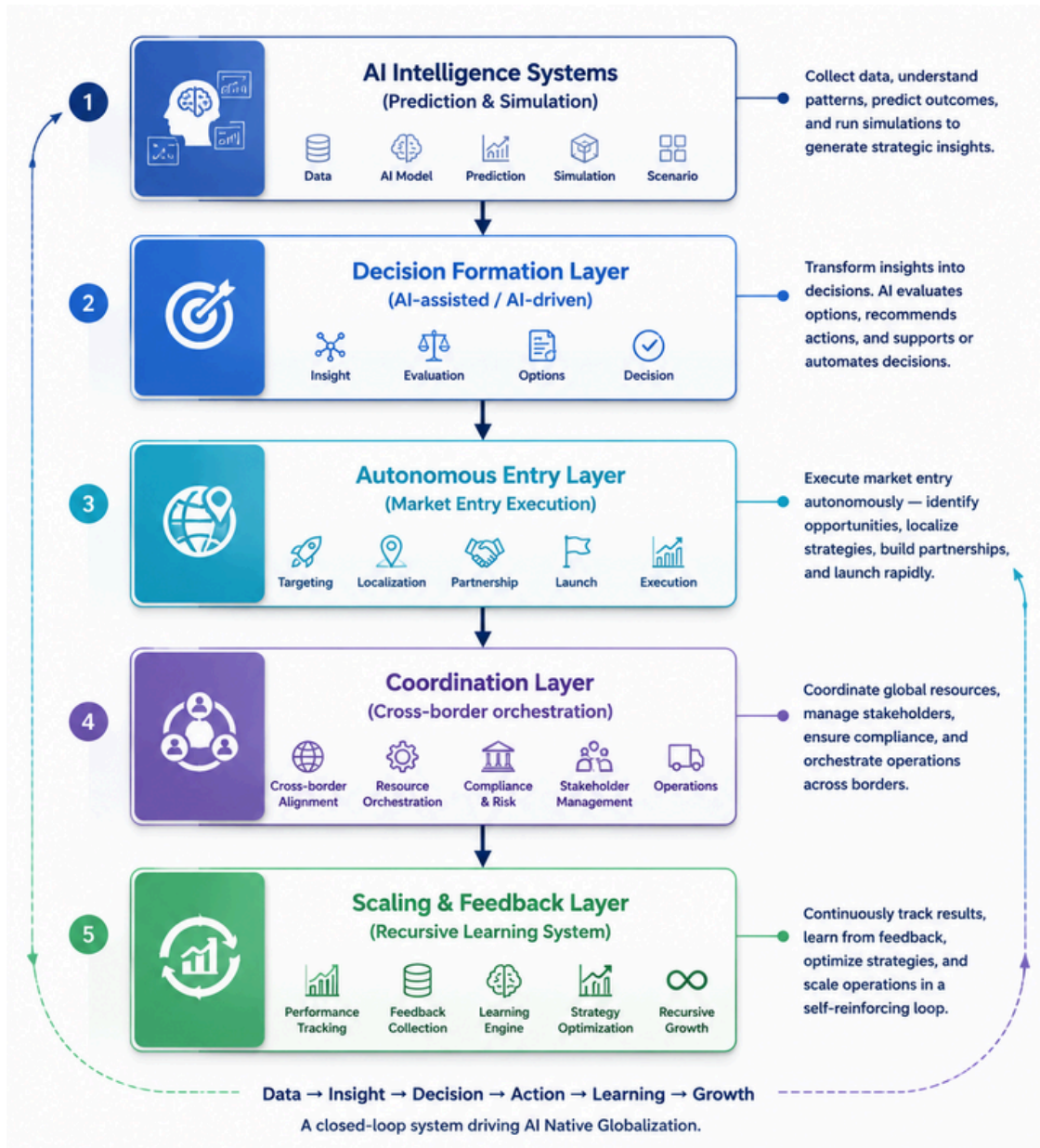


Figure 1. ANG Mechanism Model